



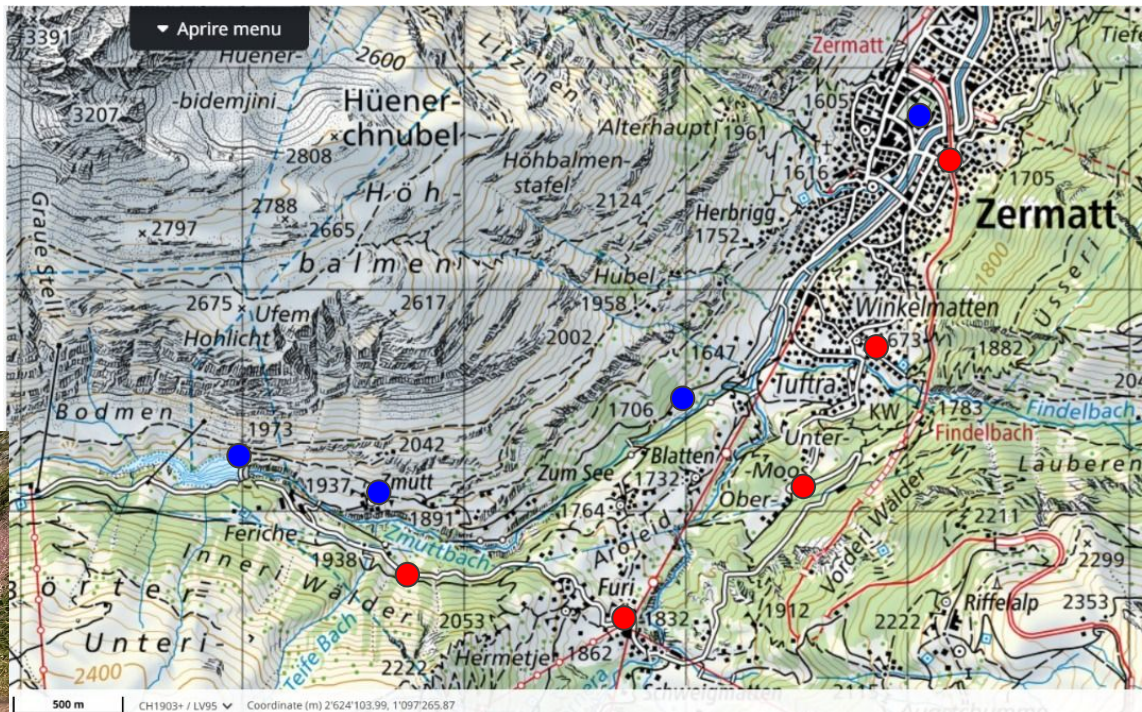
Rock tribology in Zermatt

27-28 Aug 2025

André HANSEN VIEIRA
Arianna PASSARETTI
Hassan JAMIL
Khalef BOULEFRAKH
Mario GUALAVISI

EPFL Field work

- Train to Zermatt + hike around the region
- 4 hour hike, ~10 km



Aller
Retour



Hand for scale



Morphological
resemblance to mylonites

Faults II - Slip planes



Potential mix between in-plane and out-of-plane shear

Faults - III



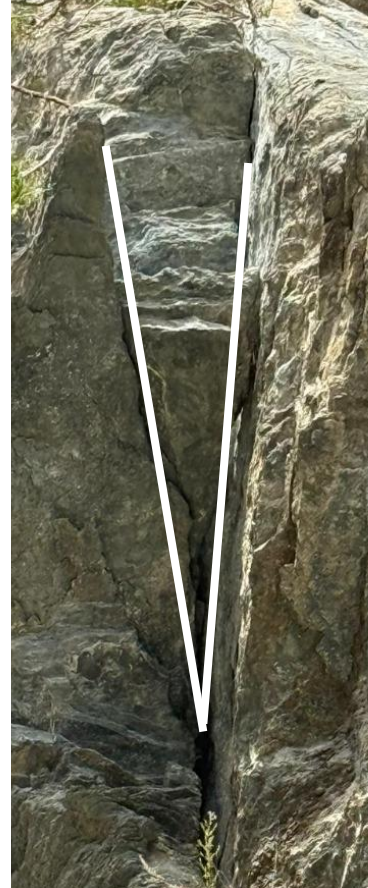
Presence of step-like formations in rocks

Faults IV



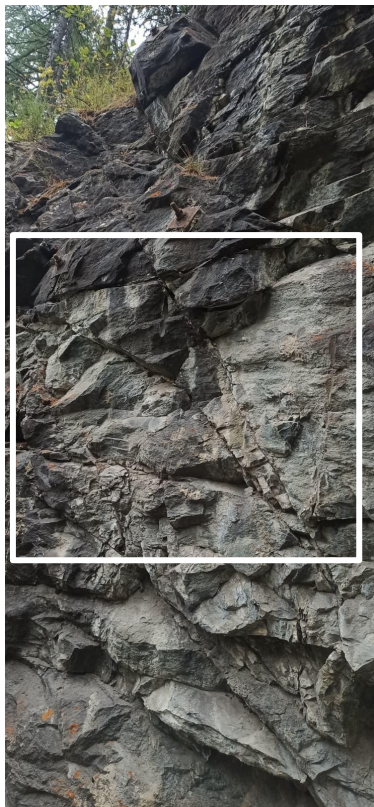
Evidence of sliding
through parallel
sliding planes

Conjugate faults



Apparent symmetry
in crack formation

3rd body



Granular gouge
(3rd body)
from conjugate
faults

One geological formation, different tribological phenomena





Thank you!

Annexes





Natural or
man-made?